

7 - 3

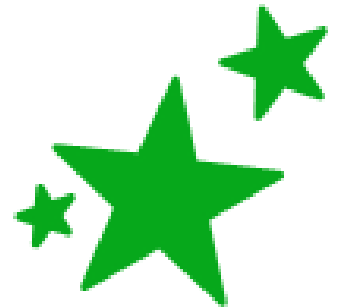
Relations and Functions

relation: set of points

domain: all the x's

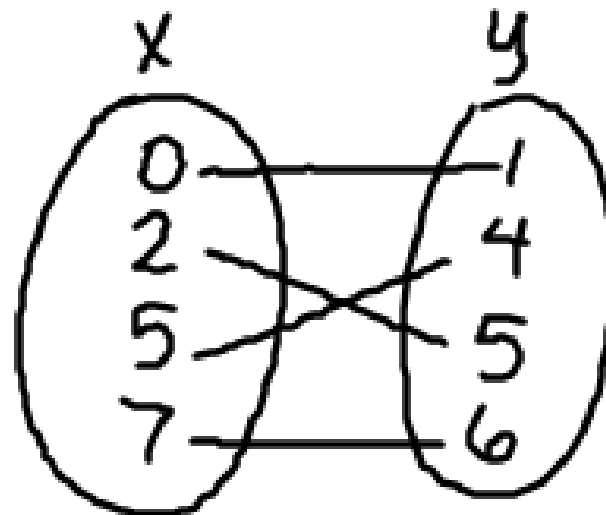
range: all the y's

function: NO repeat x's



can draw a mapping...

(0, 1) (2, 5) (5, 4) (7, 6)



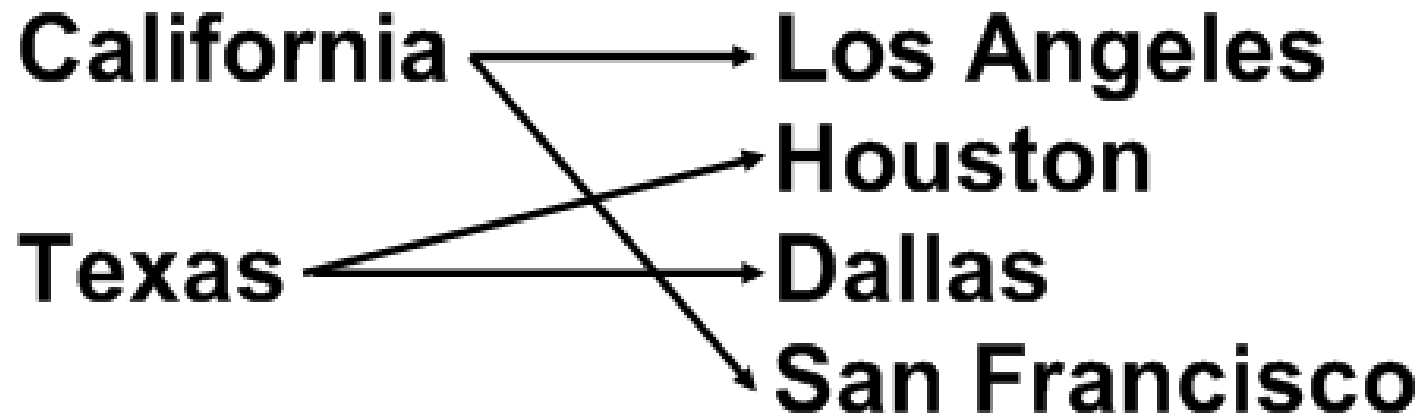
Domain: 0, 2, 5, 7

Range: 1, 4, 5, 6

Function?

yes





Function? *no*



Ex: (-2, 3) (0, 1) (-1, 3) (4, 2)

Draw a mapping.

Domain:

Function?

Range:



OK

(4, 1)

(3, 1)

(-2, 1)

yes, it is
a function

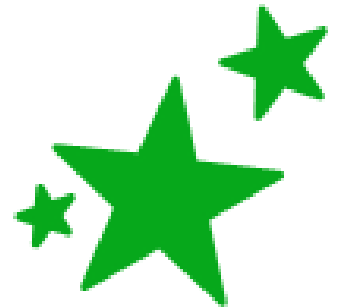
NOT OK

(-2, 5)

(-2, 1)

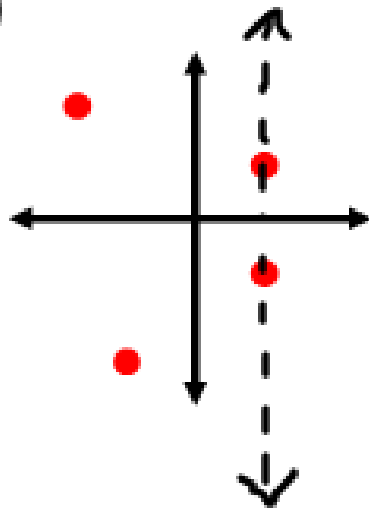
(-2, -3)

no, not a
function



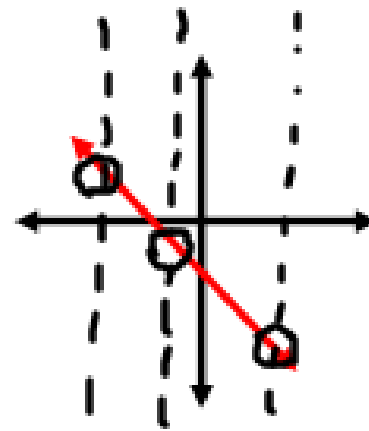
Use a vertical line test to tell on a graph...

a.)



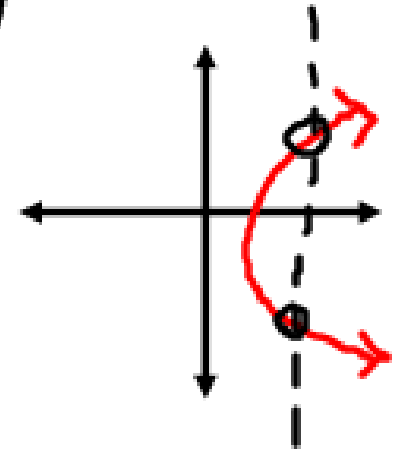
no

b.)



Yes

c.)



no



Homework:

p. 316 #12 - 27

